



DIGITAL SIGNAGE SOLUTION

**CONNECT WITH YOUR AUDIENCE
IN A VISUAL WORLD**



LEADER IN DIGITAL SIGNAGE SOLUTIONS, PRESENT IN MORE THAN 50,000 SCREENS IN 90 COUNTRIES WORLDWIDE

Cayin develops industrial grade quality products, designed to last and have long term stability; plus, they are perfectly integrated with an SW and a strong operative system for digital signage apps, from one to thousands of screens.



12 YEARS

of experience in the digital signage solutions development



+90 COUNTRIES

Customers support in over 90 countries



+1000 BRANDS

More than 1000 brands and institutions connected by digital signage





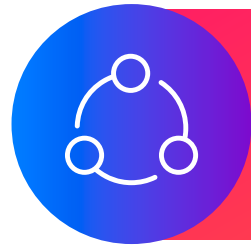
ONE TIME INVESTMENT

No more additional licenses or monthly fees after buying SMP players or CMS servers. Quick support response is offered, flexible customization services and free cloud resources.



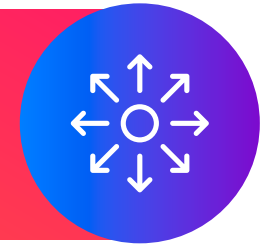
READY TO USE

The SMP players and CMS servers incorporate industrial quality hardware and digital signage advanced software. You don't need to worry to integrate the hardware, OS and software; all you have to do is plug in and use. There will be no compatibility issues.



OPEN PLATFORM FOR INTEGRATION

The SMP players are able to receive data from the cloud or other external systems, such as social media, queue administration, factory and corpo administration systems, hotel administration, sells and inventory system, sport games system, etcetera.



SCALABLE APPLICATIONS

Industrial quality digital signage devices for several applications scales with long term stability. Independent solutions, connected in a centralized management network of multiple points from your headquarters.



INTERNAL COMMUNICATION

- Internal communication strategy with dynamic information.
- Staff awards/recognitions.
- 100% collaborators scope.
- Motivation.
- Higher productivity.



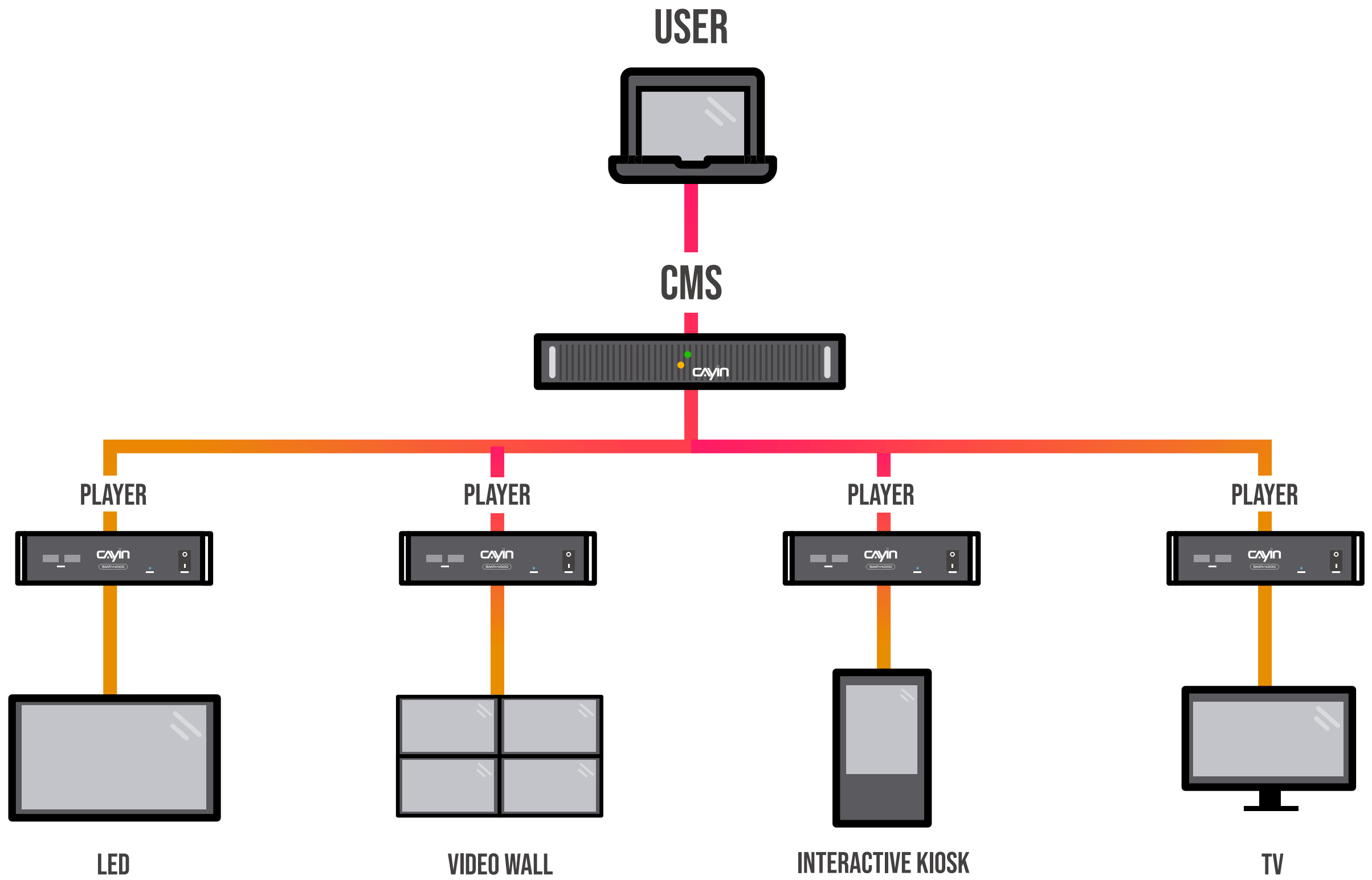
BRANDING/ PUBLICITY/ MARKETING/ COMMUNICATION

- Branding.
- Sales increase.
- Improve site experience.

SUPPLY CHAIN/ INDICATOR ENGINEERING/ PRODUCTION

- Increase operational efficiency.
- Higher productivity when monitoring on real time.
- Higher commitment to goals.
- Alert messages.
- Accident and risks reduction.





EFFECTIVE MONITORING AND ADMINISTRATION

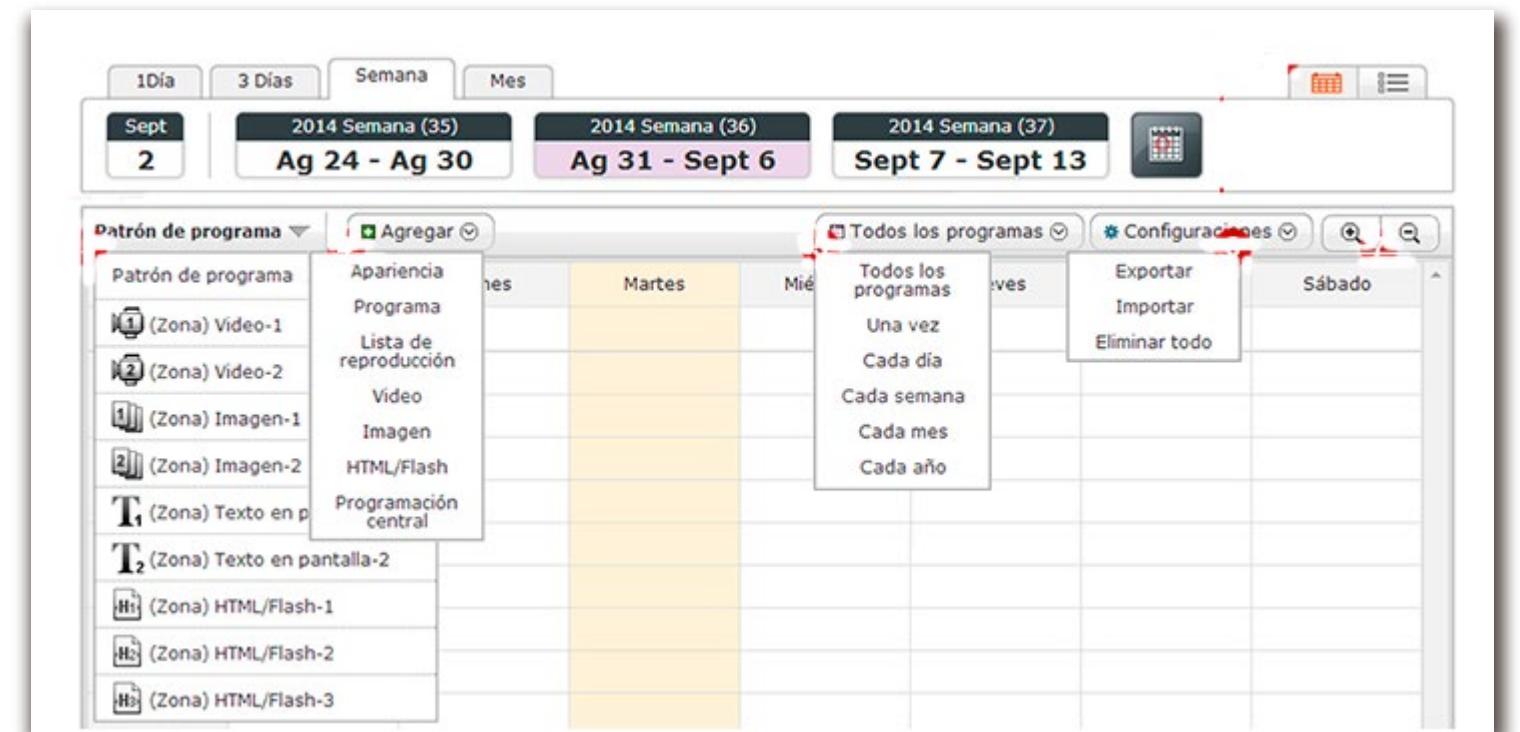
- Remote and centralized administration
- Real time monitoring



HIGHLIGHTS

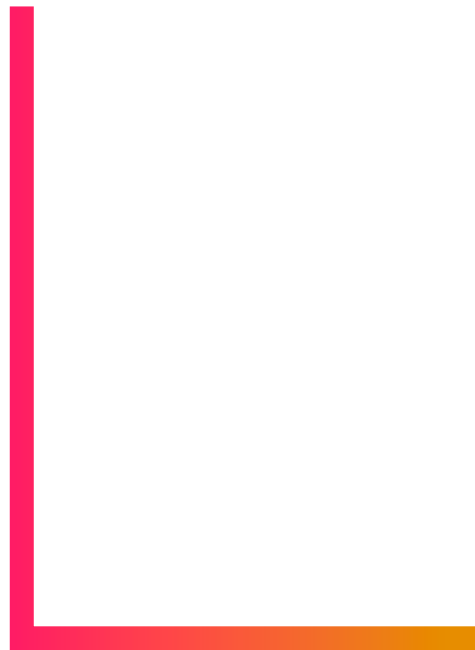
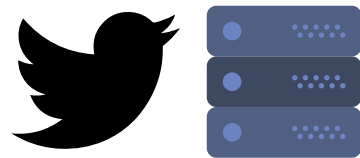
FLEXIBILITY AND MULTIPLE POSSIBILITIES ON PROGRAMMATION AND CONTENT MANAGEMENT

- Several reproduction options
- Screen - Templates division
- Scheduling Flexibility
- Web integration



HIGHLIGHTS

INTEGRATION AND WEB OPTIMIZATION HTML5 CONTENT



- Dynamic information from RSS sources
- Social Media Content
- Custom web

HIGHLIGHTS

VIDEO STREAMING CAPABILITY

- RTP-RTB-HTTP Protocols
- Streaming Live or On Demand video platform



HIGHLIGHTS

CAYIN SDK / INTERACTIVE APPLICATIONS

- Powerful SDK with APIs based on HTTP
- HTML labels to control players
- Interactive touchscreen applications
- Integration with mobile app



HIGHLIGHTS

24/7 ONLINE HELP

- Interactive, detailed and updated online user manual

The screenshot displays the 'CAYIN Digital Signage - Online Help' interface. At the top, it shows 'Producto: SMP', 'No. de Doc.: MS22ES-01', and 'Versión: Español'. The left sidebar contains a navigation menu with categories like 'Información General', 'Primeros Pasos', 'Device Seeker', 'Actualización de Contenido', 'Sistema', 'Pantalla', 'Periféricos', 'Servicio', 'Hora', 'Mantenimiento', 'Biblioteca', 'Reproducción', 'Programación', 'Red', 'CMS', 'Registro', 'Consola SMP', 'Skin Editor', 'Uso del Reproductor multimedia CAYIN en HTML', 'CAYIN SDK v1.0', 'Otros', 'Aviso de Copyright, Aviso de Marca Comercial, Descargos de Responsabilidad', and 'Historial de Revisión'. The main content area is titled 'Sistema > Información General del Sistema' and contains the following text:

Información General del Sistema
Puede al mismo tiempo tener una visión completa del estado del sistema en general y configurar el sistema en la página **Información General del Sistema** . Hay tres grandes secciones:

- [Sistema](#)
- [Red](#)
- [Parche](#)

Sistema
Puede verificar el estado de sistema en esta sección, pero sólo los ítems con el icono  al final pueden ser editados directamente en esta página. Desplace su mouse sobre la información que desea editar y verá aparecer un cuadro. Haga clic en cualquier lugar dentro del cuadro e ingrese texto; luego haga clic en  para completar el edición. Si desea cancelar la edición, haga clic en .

Modelo	El modelo de este reproductor SMP.
Versión	La versión de este reproductor SMP.
Licencia	Especificar el nombre de equipo de este reproductor SMP.
Nombre de Equipo	Especificar el nombre de equipo de este reproductor SMP.
Grupo	Especificar el nombre de grupo en el que pertenece este reproductor.

Ubicación
Hay dos tipos de configuración de ubicación:

-  **GPS:** Puede verificar la ubicación actual del reproductor SMP si habilita la función de GPS y determina las configuraciones con éxito en la página de **SISTEMA > Periféricos > GPS**. El sistema actualizará los datos cada 5 segundos.
-  **Ubicación estática:** Puede establecer una ubicación estática para este reproductor SMP; luego puede ver este reproductor en Google Maps con GPS. Haga clic en  y puede establecer una ubicación estática. Si no ha configurado la ubicación, SMP detectará su dirección IP y mostrará una posible ubicación actual. De todos modos puede modificar la dirección mediante los siguientes tres

SMP-2100

FULL HD
1080 p



DUAL HDMI - HTML5 SUPPORT
LIMITLESS POSSIBILITIES

- Industrial grade player with 2 HDMI output
- Full HD and capability to run strong applications on HTML5
- Social content
- Video streaming

SMP-2100 with industrial grade hardware and integrated software dedicated to digital signage. **SMP-NE02** as a complete multimedia player for digital billboard applications.

DUAL VIDEO OUTPUT

You can control two screens, both in vertical and horizontal orientation for most of the popular resolution,s or the ones defined by the user.



Simple



Cloned



Extended



Different



Display port



HTML5



Cloud resources



1080p Full HD



Vertical view



SMP-2100

SMP-8000QD

4K
UltraHD



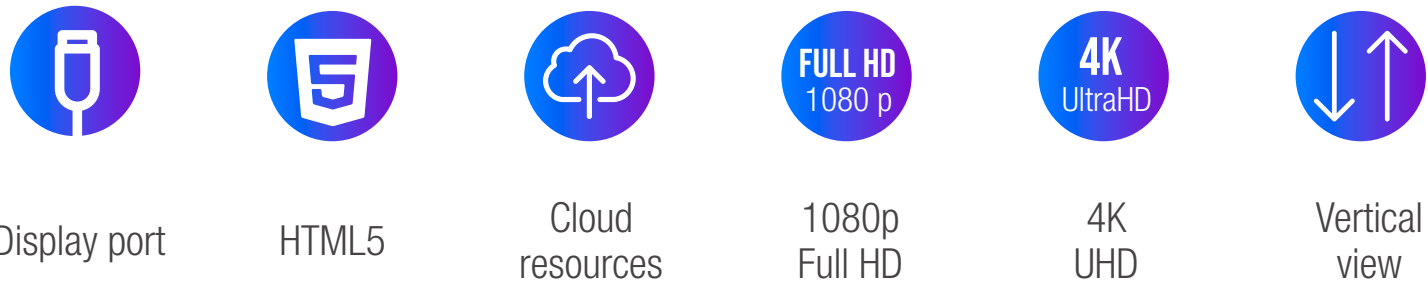
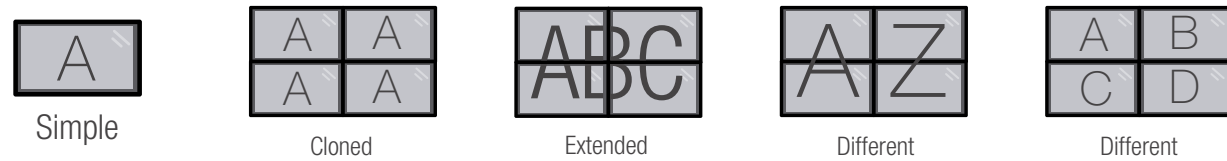
4K VIDEO WALL 4 **FULL POWER SCREENS**

- High-quality processing power
- 4K ULTRA HD
- 4 FULL HD outputs
- Capacity for heavy HTML5 applications
- Social content
- Video streaming

SMP-800 with industrial grade hardware and integrated software dedicated to digital signage. **SMP-NE02** as a complete multimedia player for digital billboard applications.

FOUR OUTPUT VIDEO MODES

SMP-8000 admits the following four signal outputs modes to provide more flexible combinations for presentations:



SMP-8000QD

CMS

HIGH END DIGITAL SIGNAGE SERVERS EFFECTIVE AND CENTRALIZED ADMINISTRATION

Industrial grade servers designed and integrated to manage from one to thousands players in a centralized way.



CAYIN digital signage servers are built with the following features:

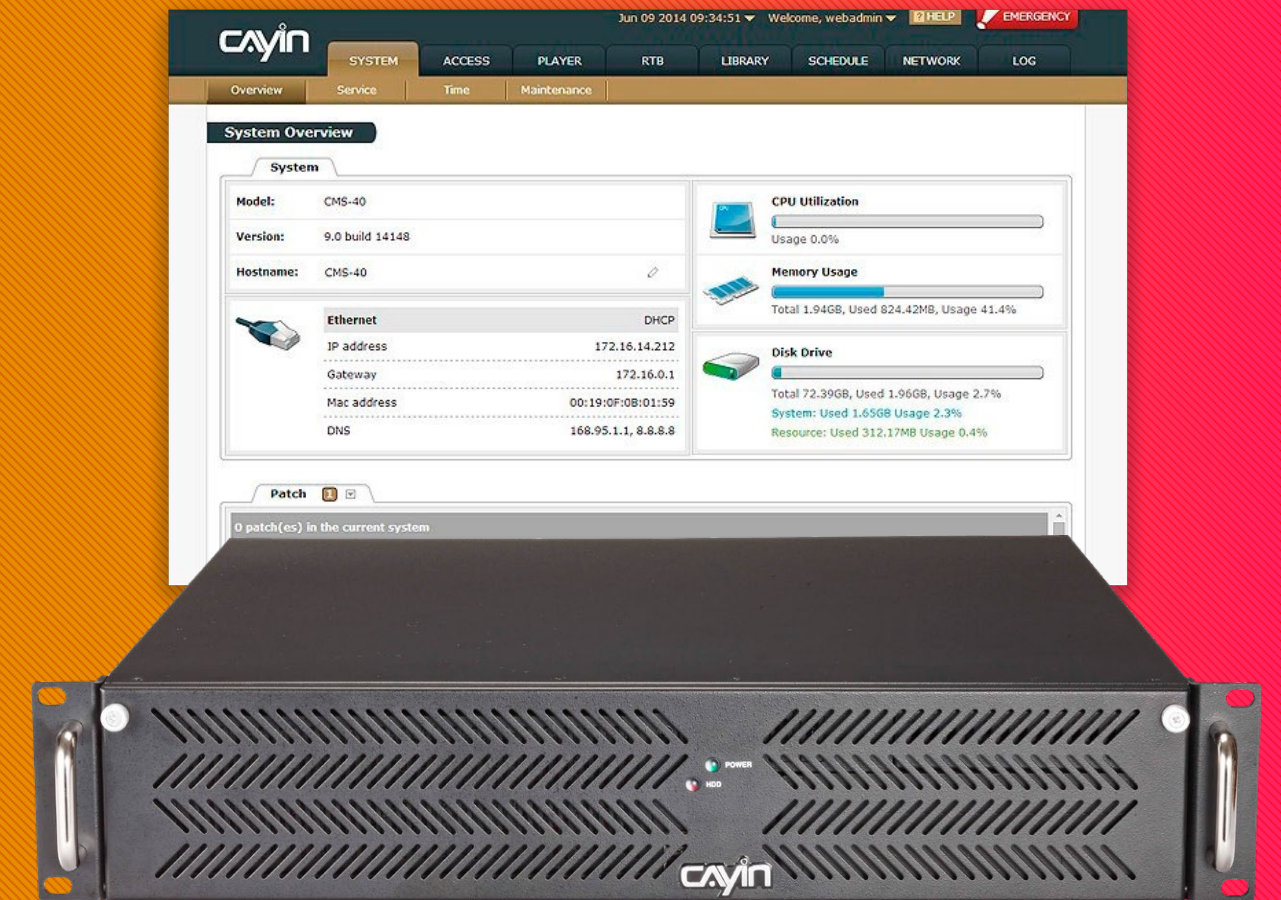
- Supported: SMP - NEO & SMP - NEO2
- Equipped with an intuitive user interface and online help access
- Offers a centralized and flexible programming based on one time only, daily, weekly, monthly or yearly time scales.
- Emergency messages diffusion in only two clicks.
- Library and cloud resources, freely available



Multimedia players
administration



Central
Programming

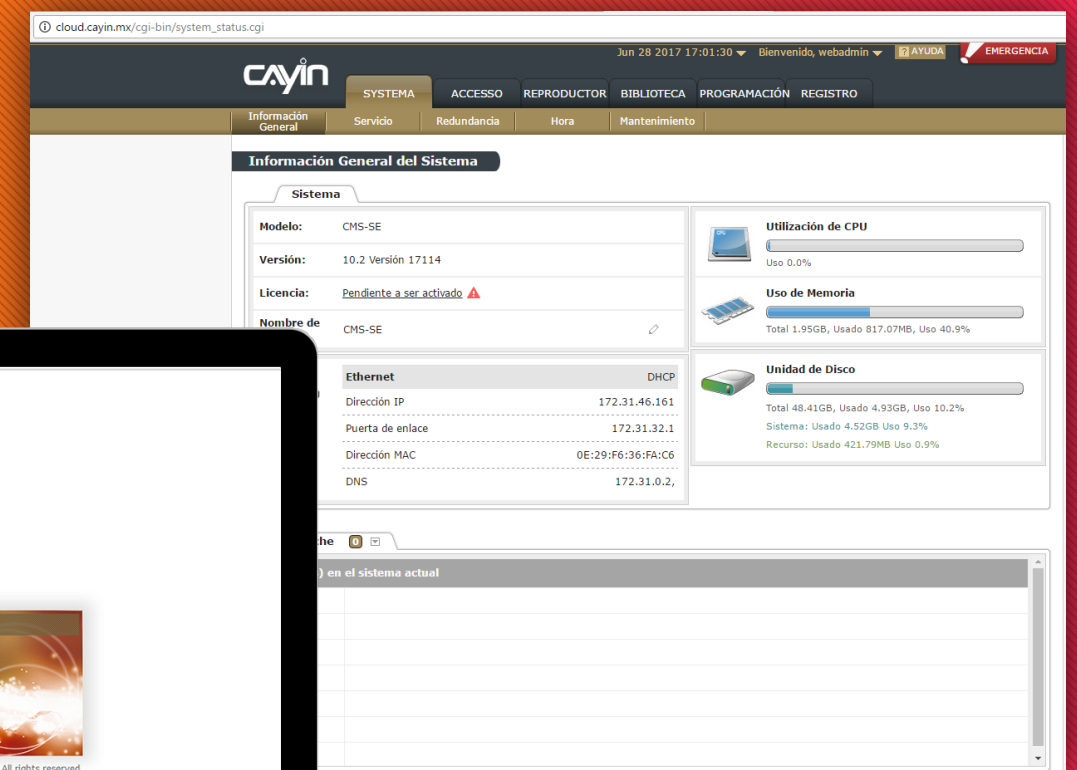
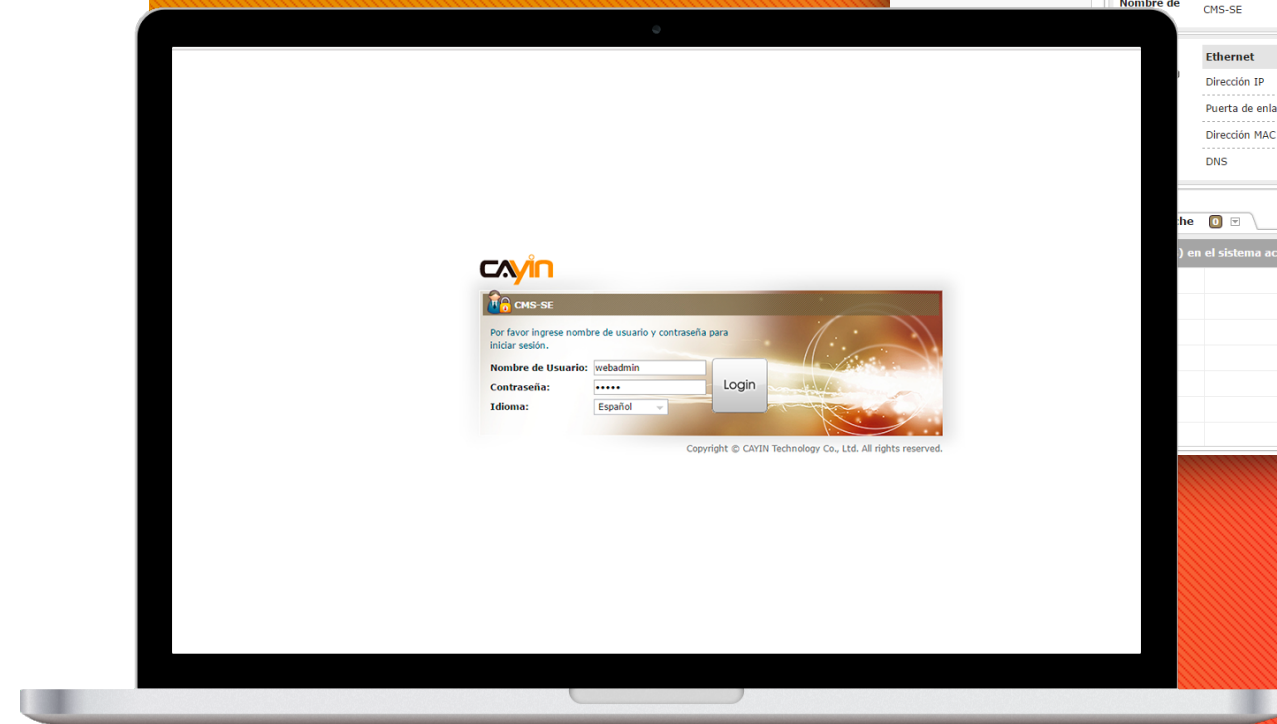


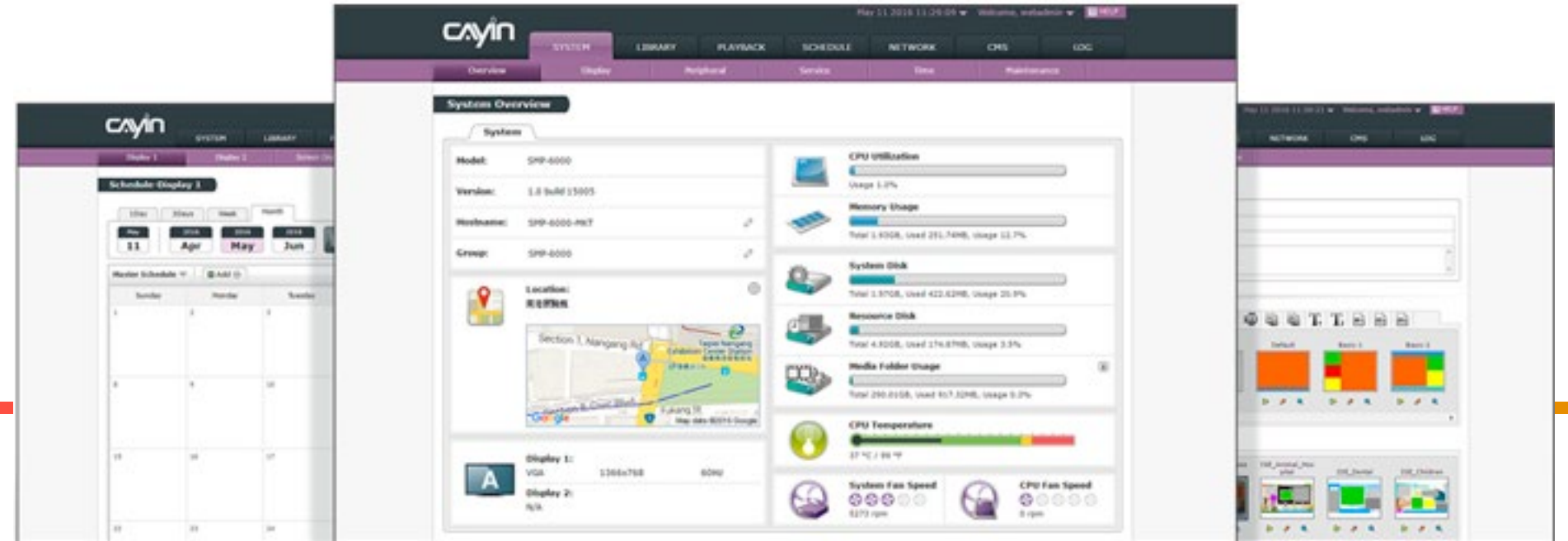
CMS

CAYIN CLOUD

ALL THE CAYIN BENEFITS ON THE CLOUD

Cayin-Cloud is a safe and effective solution to manage the players without any infrastructure investment and avoiding costs and maintenance that implies.





SMP-NEO2

THE BEST INTEGRATED SOFTWARE FOR DIGITAL SIGNAGE

More powerful! **SMP-NEO2** is the next generation of digital signage software, made for CAYIN versatile players of digital signage. Adopt avant-garde technology and integrate all the advantages that a web-based, zone-based multimedia players from past versions can give you.



Easier remote management



Distintas opciones de reproducción



Web services integration



Content preview



Web templates creation






Programming flexibility



DIGITAL SIGNAGE SOLUTION

SUCCESS CASES



Modelo	 SMP-8000	 SMP-6000	 SMP-2100
Software	SMP-NEO2	SMP-NEO2	SMP-NEO2
Dimensión	250 (W) x 190 (D) x 35 (H) mm	275 (W) x 181 (D) x 50 (H) mm	129 (W) x 109.4 (D) x 34 (H) mm
Peso	2.2 Kg	2.2 Kg	0.9 Kg
Número de zonas	11 (Skin)/ Ilimitado (HTML)	11 (Skin)/ Ilimitado (HTML)	11 (Skin)/ Ilimitado (HTML)
Área de vídeo	2 / 4	2 / 4	2
Salida de señal	Modos Sencillo, Clonar, Extendidos y Distinto	Modos Sencillo, Clonar, Extendidos y Distinto	Modos Sencillo, Clonar, Extendidos y Distinto
Resolución definida por el usuario	v	v	v
Resolución máxima de pantalla	Modo Sencillo: 4096 (anchura o altura) Modo Otros: 2048 (anchura o altura)	2048 (anchura o altura)	2048 (anchura o altura)
Resolución de vídeo	1x4K o 4x1080p*	2 x 1080p	2 x 1080p
Entrada de vídeo	-	S-Video	-
VGA	-	1	-
DVI-D	-	1	-
HDMI	-	1	2
DisplayPort	4	-	-
Sin ventilador	-	-	v
Flash, HTML, Web App	v	v	v
GPS	v	v	v
GSM, Inalámbrico	v	v	v
Programación	v	v	v
Pantalla táctil	v	v	v
Visualización vertical	v	v	v

Cayin

DIGITAL SIGNAGE SOLUTION

WWW.CAYINTECH.COM

